

# Manawaru School Newsletter



442 Manawaru Road  
RD1 Te Aroha 3391  
office@manawaru.school.nz  
Phone: (07) 884 6691  
www.manawaru.school.nz

Find us on 

# 16th May 2023

## Empowering learners for their future



### PRINCIPAL'S REPORT

It is lovely to see sunshine out of my window today! The poor children have been going stir crazy being cooped up all week, so they are enjoying racing around outside again. We are also enjoying seeing them burn off their excess energy! :)

This week is going to be another busy one, with Rippa Rugby planned, and the seniors heading off to Young Leader's Day. In these times of social media distortion, we believe it is even more important than ever that the senior class is exposed to strong inspirational speakers. It is a long day, but definitely worth the effort. Thank you to the parents that enable this day to happen.

We are going a bit green at moment, with growth! We do have some water blasting work planned, but if there is anyone who is keen to spray some of our tricky spots we have a backpack, and some spray. There are a few jobs around the place that we would really appreciate some help with, if you are looking for something to do!

This week we farewelled our Learning Support Coordinator (LSC) Paula Haddock. We will miss Paula's positive attitude. Her determination to enable our learners to have the best access to learning they possibly can, has made a positive difference to Manawaru School. We are fortunate to have 2 LSCs in the Te Aroha Kaahui Ako. There are only 600 in the country, it is such a shame that every school doesn't have access to these advocates for learning. The original plan was to cover the country with them. The change in political influence meant this didn't happen. Thank you Paula, for the impact you have had! We won't lose Paula completely. She is back working in the ECE space, still working for the Te Aroha learner.

We are looking out for a teacher aide for several terms. This role is part time, with the times to be negotiated. We are looking for a team player who is reliable and positive. Experience is not essential, a sense of humour is! If this sounds like you, and you are looking for 20 hours a week during school time please contact me for more information.

As we head towards the 1st June it would be great to know of any learners heading our way, so we can ensure we can give them the best start that we can. It can often be something overlooked in the craziness of a move, but it is helpful.

Let's hope for some more sunny days to keep us all loaded with vitamin D and positivity!

Rosemary

***"I cannot do all the good that the world needs. But the world needs all the good that I can do."***

***— Jana Stanfield***

## COMING EVENTS

### May

- 16 National Young Leaders Day
- 17 Libraries Alive
- 19 Pink Shirt Day
- 19 Oxford Pies at School to collect

### June

- 5 Public Holiday - Kings Birthday

## A HUGE THANK YOU

to our lovely rural delivery man, John Lusby for delivering our district newsletter for Manawaru School!

## School Bus Driver Needed Urgently!!!

We need a new school bus driver for the Manawaru school route urgently! If we cannot get one soon, we will have to give this service up, something we do not want to do.

The driver would need a P endorsement and a clean, class 2 license.

The P endorsement is a police check and a yearly fee. The class 2 license we can help out with.

Greenline pays 3 hours per school day at \$25.00 an hour, plus 8% holiday pay and the bus can be parked at their home subject to the distance from school.

**Please contact Allen on 0274722536**

## Manawaru Table Tennis Club

Wednesday's 7:30pm

Starting on 5th April

Manawaru Hall

New Members welcome!

Ragvir Singh

(07) 8846758

## Manawaru Bowls Club

Starts 9 March

Manawaru Hall - 7.00pm start

For more information contact

Mark Davey on 0272813621

## **Room 4 is looking for Lego**

If you have any unwanted Lego and would like to donate it, please bring it in to school, so it can be enjoyed by our new entrant class.

## REMINDERS

If you would like to pay by internet banking for **stationery (e.g. Prime Maths books) or T shirts, hoodies, etc.** our school bank account number is:

**03 1573 0013006 00**

**The Fundraising Club account for any sausage sizzles or fundraising items is:**

## MANAWARU HALL BOOKINGS

If you would like to make any hall bookings please phone Alys on 021 0230 3003

## Rally@412



Rally is an exciting children's programme for 7-12 year olds and is held every

second Monday, usually at the Manawaru Bible Chapel at 412 Manawaru Road from 6:30-8:30pm.

Children will be challenged with games, sport & craft work; they will learn life skills, earn badges, and participate in a Bible based time focussed on Christian teaching and values.

Transport is available in some areas.

Parents are most welcome to attend any Rally night. Fees are \$5 per term with an occasional extra charge for special activities.

For more information contact:

Joy Wallace 0274518920 Denis Wallace 0276003080 Next Rally Night 2023 May 1st 6:30 – 8:30pm at the Chapel



# THE 2023 ADVENTURES OF ROOM 4

Room 4 is small in numbers but big in our endeavours. We would like to show everyone how amazing we are and what we have achieved so far this year.

A fun trip to Bullswool Farm. We aced the games and had the animals eating out of our hands!



Swimming was easy. We swam in very deep water and really improved our skills. Afterwards we did read and feed all by ourselves!



We are super scientists. In Term 1 we studied floating and sinking. We designed boats to float in our trough. The shape and density had to be good for the boats to float. We practised first with clay. We know what dense means. Check out the group all stuck together. We made icebergs and ice blocks. Yummy!!! Being a scientist is fun!



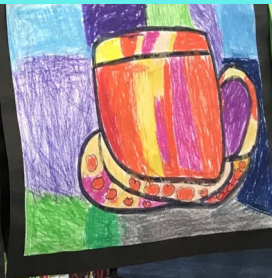
Balancing a staff and twirling it like a helicopter, well... we are just awesome! You could say we are on fire!!!







We are making important connections to people and places in our community. Thank you to the **Manawaru Play Centre** for letting us come and join in all your wonderful activities. We had a blast creating and building.



We are amazing artists. Warm teacups and cool backgrounds. Pop art teacups. Painted autumn leaves. Boy do we have creativity and style!



We might only be 5, but we are pretty switched on and making the most of school. We rock at writing and reading! So watch this space. We will impress you with our progress. To sum it all up Room 4 are just like superheroes. We can do anything if we try!





# Manawaru Community Welcome In - 2023



Friday June 30th 7:15 -8:30  
@ the Manawaru Community Hall

Are you a newbie, been here a while now or a real old timer?

Well it's time for a catch up and a chance to get to know you!

Being part of a Community encourages good health in many ways, so let's get together and say hi to the new-comers and show them what a wonderful community we have.

Bring a plate of food to share for supper and we'll provide the rest.

Any questions & details of new residents, please phone Denis & Joy Wallace at 0274518920 or email [denisandjoy@gmail.com](mailto:denisandjoy@gmail.com).

Sponsored by the Manawaru Bible Chapel



7 Lawrence Avenue, Te Aroha (07) 884 8749 (07) 884 8709

Our sessions run Monday to Friday from 8.30am to 2.30pm

Providing great quality education to the children of Te Aroha for the past 52 years.

Te Aroha Kindergarten is a spacious, well resourced centre staffed by fully trained and registered teachers.

Free Hours for over 3 years, please contact us today for an appointment.



# Welcome to our Village Manawaru Playcentre



Have a 0-6yr old?  
looking for a fun place to play together?  
come join us at  
405B Manawaru rd  
Mondays and Fridays  
9.30am-12noon

Check us out on Instagram and Facebook

OR email us at:

[manawaru@playcentre.org.nz](mailto:manawaru@playcentre.org.nz)

*We look forward to meeting you!*



"Whānau tupu ngātahi – families growing together"

## MBC FOODBANK

Open Wednesdays 17:30-19:00 or by appointment, at  
Manawaru Bible Chapel—  
412 Manawaru Road.  
Mobile: 02041013371  
Email: [manawarufoodbank@gmail.com](mailto:manawarufoodbank@gmail.com)  
Facebook: Manawaru Bible Chapel Foodbank

If you live in the Manawaru or Wairere communities and you're struggling to put food on the table. **PLEASE COME.** Everyone knows that financial pressure is absolutely horrible. **It's not something to be embarrassed about.** This is not big guy handing out to little guy. We care and we have enough to share. **PLEASE COME.** Thank you for your donations—they are helping people from our community. We need non-perishable, easy to use stuff like ingredients for pasta meals (**especially sauces**), breakfast cereals, tinned veg/fruit/fish, tea, coffee, milo, baking ingredients etc. Basically, if it's non-perishable, easy to use and you could see yourself enjoying it—that's gonna be great!

Collection points are at Manawaru School Office and Café 77.

Financial donations can be sent to:  
06-0335-0405042-04



# AgPLUS

AGRICULTURE – AUTOMOTIVE – AUTO ELECTRICAL  
HEAVY DIESEL – LAWN & GARDEN – WOF AND PRE COF  
28/32 LAWRENCE AVE, TE AROHA - PH: 07 884 9901

EMAIL: [admin@agplus.co.nz](mailto:admin@agplus.co.nz)

WEBSITE: [www.agplus.co.nz](http://www.agplus.co.nz)



**Dairy Plant  
Distributors  
Water Pump  
Sales & Service**

**Allan Oliver**

**Ph/Fx (07) 884 7855  
24 hours**

**5 Lipsey Street  
P O Box 53 Te Aroha 3342  
E: [plakorural@xtra.co.nz](mailto:plakorural@xtra.co.nz)**



**FLOWERS AND GIFTS  
DELIVERED WAIKATO WIDE**  
0226309960  
[littlebelleflowers.co.nz](http://littlebelleflowers.co.nz)  
[littlebelleflowers@gmail.com](mailto:littlebelleflowers@gmail.com)



**07 884 9459**

**35 Rewi St  
Te Aroha**



*For all your stainless steel needs.  
We weld aluminium, magnesium, titanium, die cast & steel.*

## PIAKO STAINLESS & ALLOY

**Manufacturers of low pressure hot water cylinders.  
Alloy plank systems for herringbone pits**  
9 Honi St, Te Aroha ph/fx 07 884 9122



*Sue Rope*

**Sue makes it easy!**

TE AROHA, MORRINSVILLE & MATAMATA  
RESIDENTIAL & LIFESTYLE SPECIALIST

☎ 021 618 240

✉ [sue.rope@trinitynetwork.co.nz](mailto:sue.rope@trinitynetwork.co.nz)

[www.trinitynetwork.co.nz](http://www.trinitynetwork.co.nz)

Licensed REA 2006



- LiqN + Gibb
- Weed Spraying
- All Crop Spraying (maize, fodderbeet, chicory)
- Crop Management & Spray advice

Give Dale Wooller a call on  
027 502 9999 to discuss



*professional quality and advice*



Residential & Commercial  
New Homes  
Alterations & Additions  
Renovations  
Decking  
Farm Sheds  
Feed Pads  
Concrete Works  
Drive Ways  
Fences

12 Ridgeview Drive, Te Aroha  
M: 027 451 3768 P: 07 884 7283



➤ **Residential**

➤ **Rural**

➤ **Commercial  
Industrial**

For professional, prompt & quality service  
24 hours - 7 days a week

**021 138 3823  
07 884 6613  
[office@btc.co.nz](mailto:office@btc.co.nz)**

## WADE CONTRACTORS

**- FARM DRAINAGE & EXCAVATIONS -  
- BULK CARTAGE -**

- Drain Cleaning & Digging
- Hedges & Stumps Removed
- Tracks & Races Constructed
- Effluent Spreading
- Paddock Contouring

**DIGGERS, GRADERS, TRUCKS, SCOOP**  
PHONE 884 6784 Mob 0277 250 250



**JASON BRAY  
07 884 4555**

8 Lawrence Ave, Te Aroha  
[jason@autotechtearoa.co.nz](mailto:jason@autotechtearoa.co.nz)  
[www.facebook.com/autotechtearoa](http://www.facebook.com/autotechtearoa)

previously



Te Aroha 07 884 8055  
Morrinsville 07 280 5519